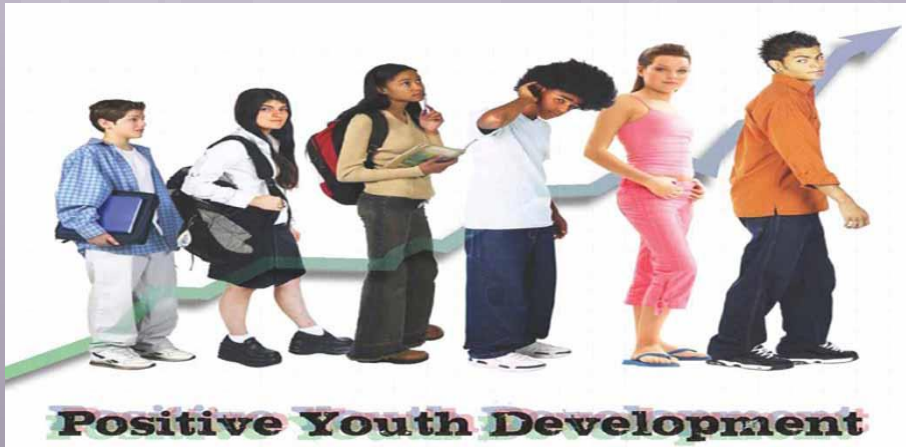


Bryan Ford

K-12 Dean of Students
and
Athletic Director



How are the kids really doing?

***Note-there is a necessary
handout that accompanies
this powerpoint ***

Today's Targets

- After this presentation, I want you to be able to:
- Explain the 40 Developmental Assets in a nutshell
- Identify strengths and weaknesses in the youth of our community
- Walk away with a few things you can do right away to help your children and the community's children



Youth Development at Dryden

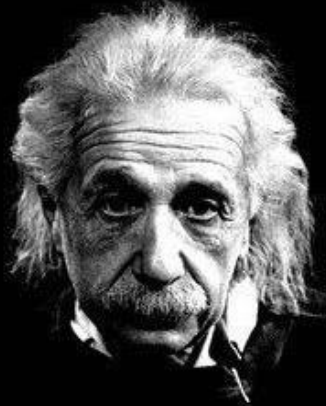
- Dryden's Mission: "Promoting academic achievement and youth development"
- 40 Developmental Assets model
 - Asset: positive experience/skill/relationship/opportunity that a youth has as a building block to success
 - A common language/philosophy
 - Research-based and whole-community focused



Shifts in Thinking

- Children are not problems to be fixed, but fires to be lit
- Less programming-focus, more relationship-building
- It is everyone's work, not just those who directly work with kids
- Children are resources, not just absorbers of them

"WE CANNOT
SOLVE OUR
PROBLEMS
WITH THE SAME
THINKING WE
USED WHEN WE
CREATED THEM"



Seek First to Understand...

- Extensive surveying to understand our students' strengths, weaknesses, etc.
 - 40 Developmental Assets survey
 - 4th, 7th, 11th each year
 - National norms to compare to
 - Communities that Care (CTC) survey
 - 7-12 every other year
 - County norms to compare to (a few national)
- Data analysis
- Key difference—problem-oriented vs. solution-oriented



CTC Findings

Prior 30 Day Usage Rates, 7-12 graders:

	2012		2014		2016	
	Dryden	County	Dryden	County	Dryden	County
Alcohol	16.2%	18.2%	14.5%	19.2%	15.5%	13.7%
Cigarettes	6.3%	5.8%	5.1%	4.7%	3.9%	2.9%
Smokeless Tobacco	6.2%	4.5%	5.4%	3.8%	3.2%	2.1%
Marijuana	9.5%	13.8%	9.1%	14.7%	11.0%	10.7%

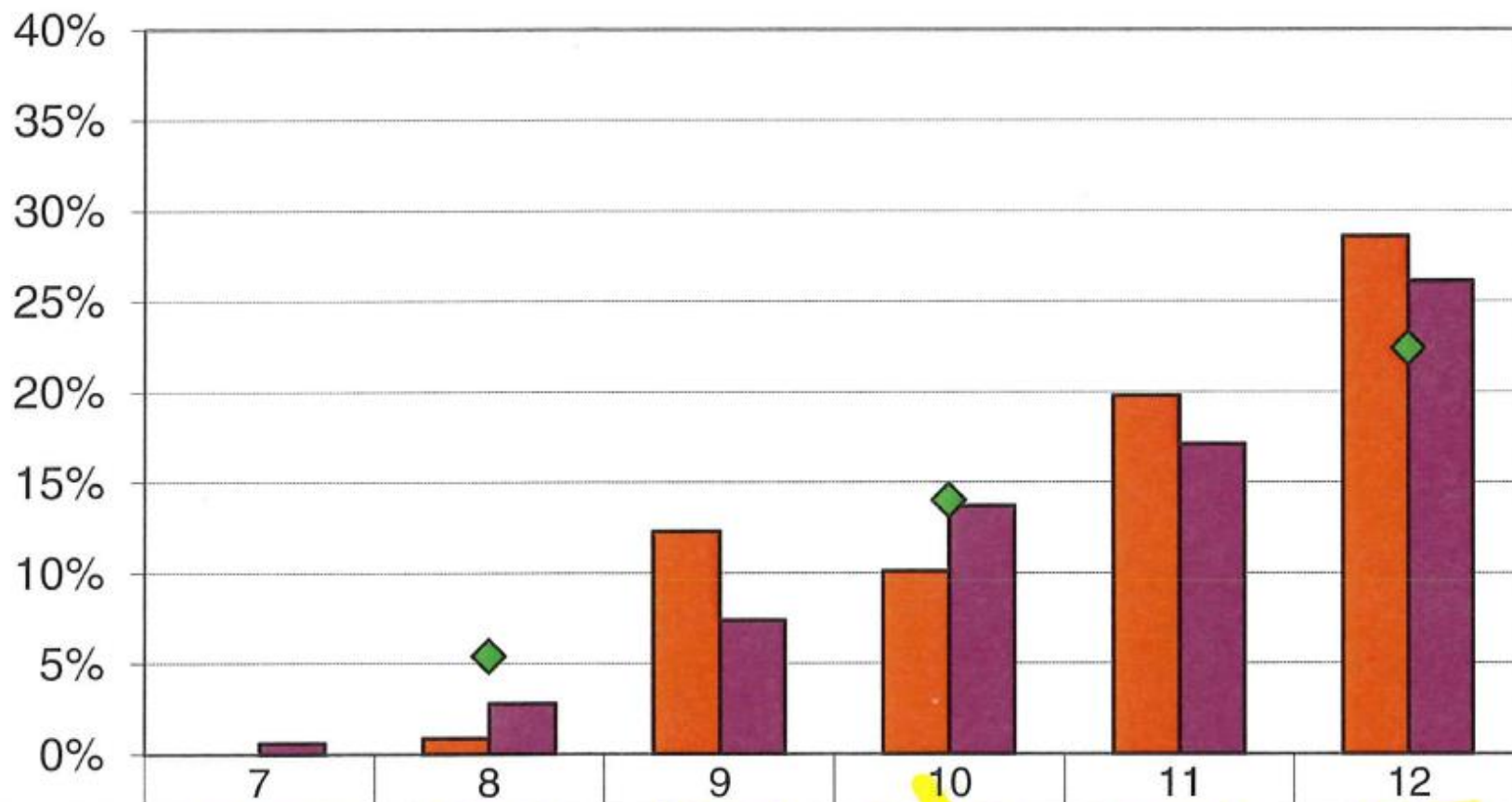
CTC Findings

% of students having used by graduation

	Dryden	County
Have smoked cigarette	22.8%	19.4%
Have drank alcohol	70.7%	66.5%
Have smoked marijuana	43.3%	42.1%
Have misused prescription drugs	14.3%	11.7%

CTC Findings

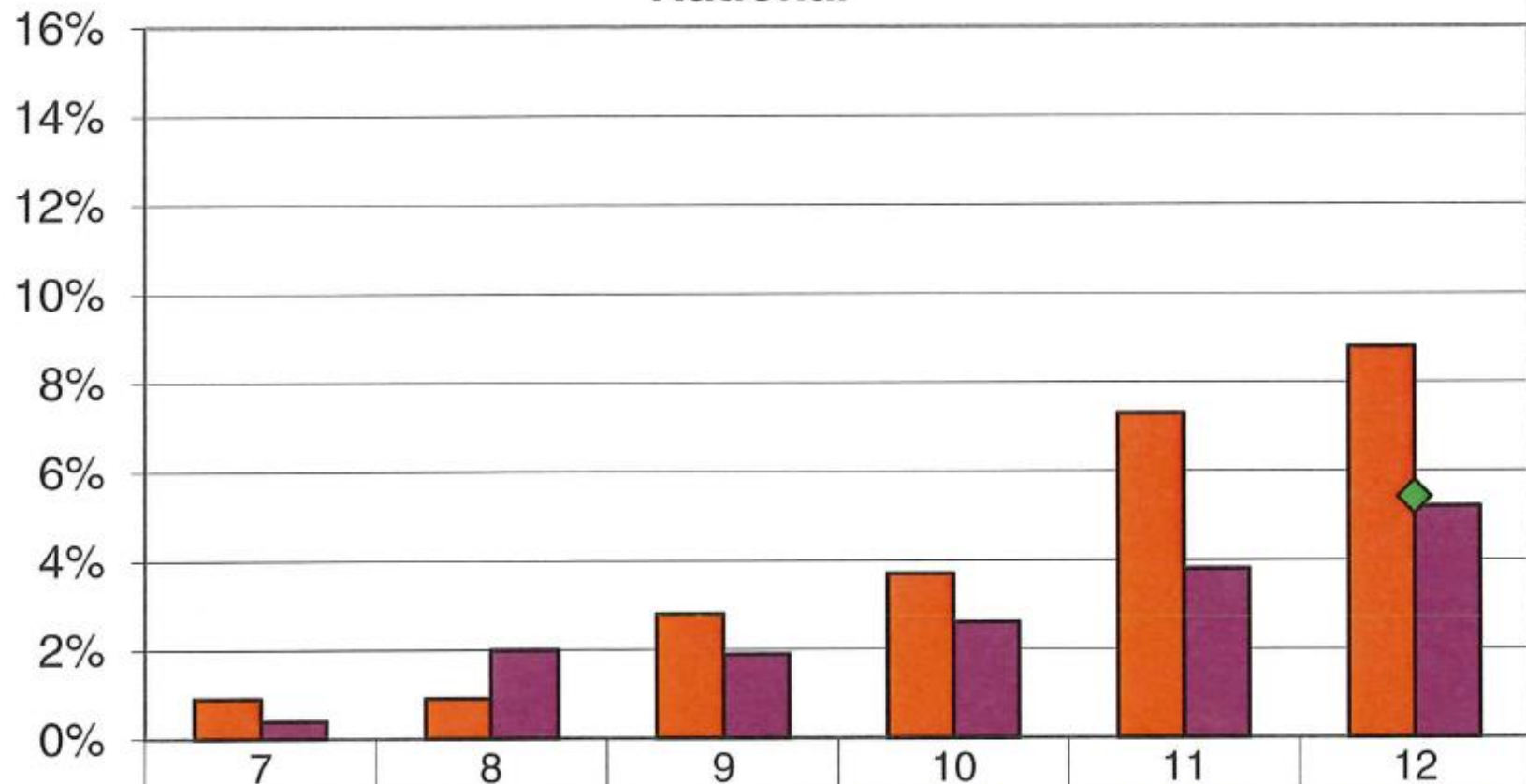
2016 30-day Marijuana Use: Dryden, Tompkins, National



■ Dryden	0.0%	0.9%	12.3%	10.1%	19.8%	28.6%
■ County	0.6%	2.8%	7.4%	13.7%	17.1%	26.1%
◆ National		5.4%		14.0%		22.4%

CTC Findings

2016 30-day Pharmaceutical Use: Dryden, Tompkins, National

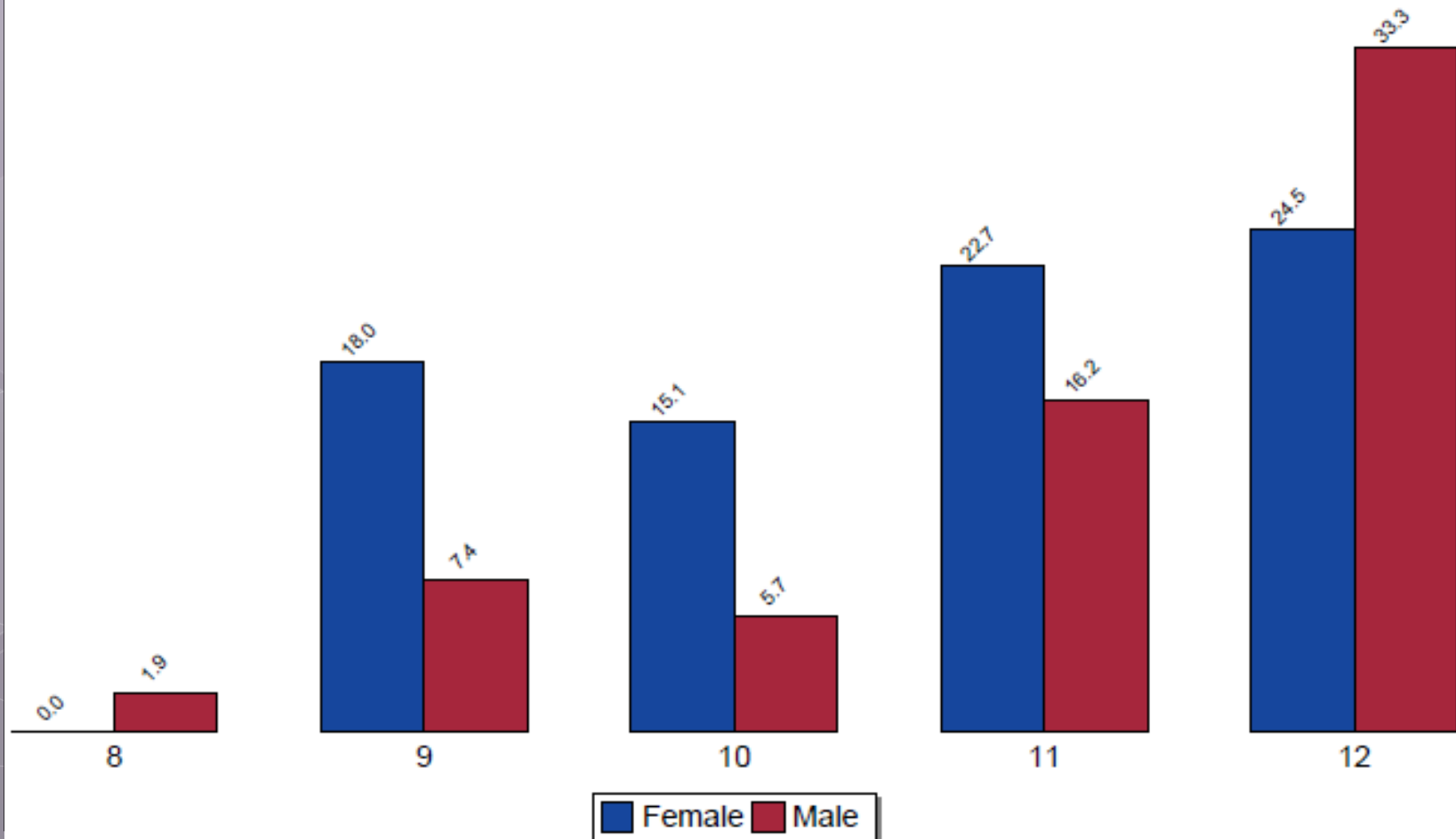


■ Dryden	0.9%	0.9%	2.8%	3.7%	7.3%	8.8%
■ County	0.4%	2.0%	1.9%	2.6%	3.8%	5.2%
◆ National						5.4%

CTC Findings

More females use than males...until senior year

Use of Marijuana by Gender



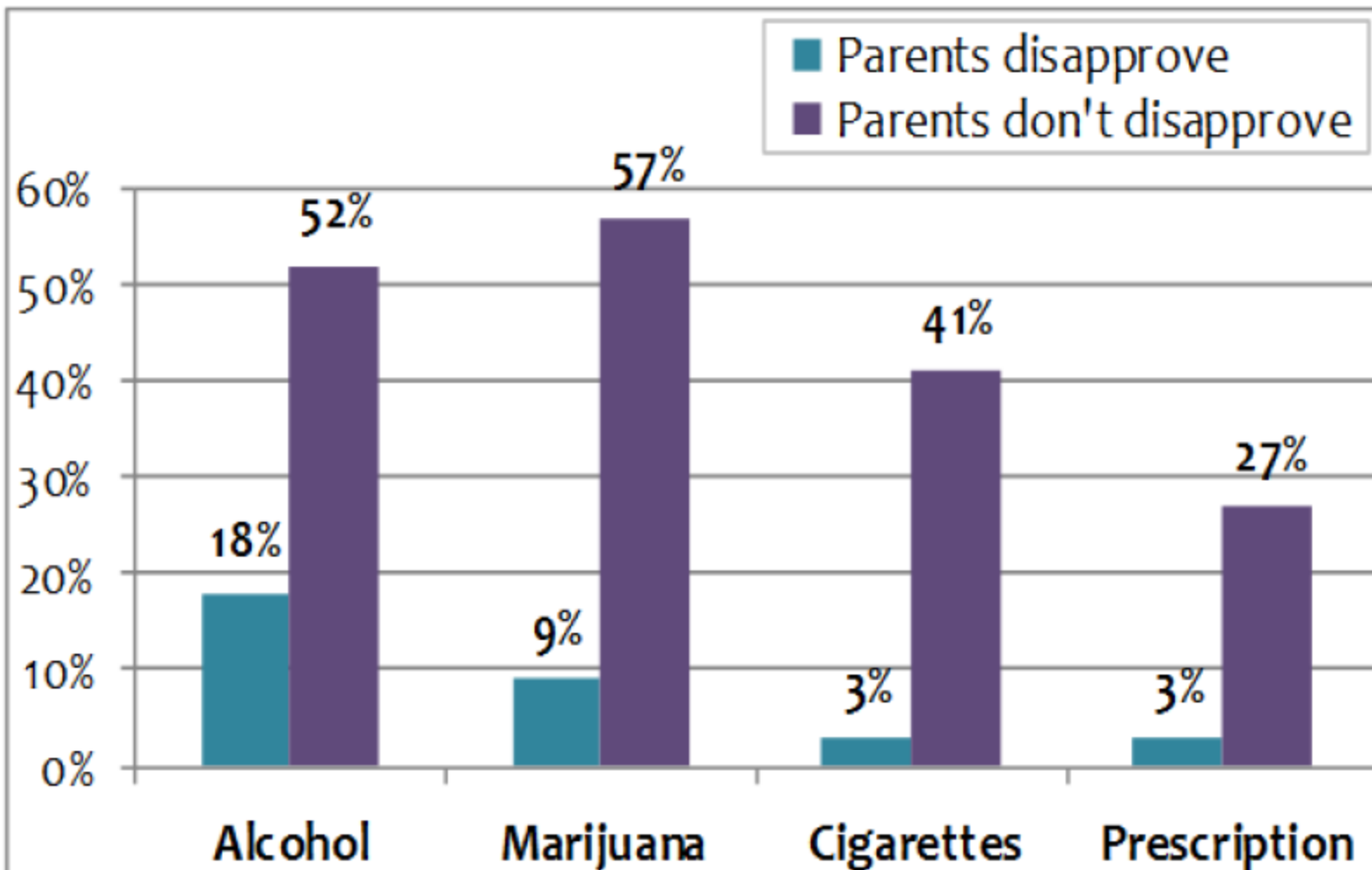
CTC Findings

Dryden Average Age of First Usage:

- Cigarettes 13.1
- Marijuana 14.3
- Alcohol 14.7

“A person who begins drinking as a young teen is four times more likely to develop alcohol dependence than someone who waits until adulthood to use alcohol.”

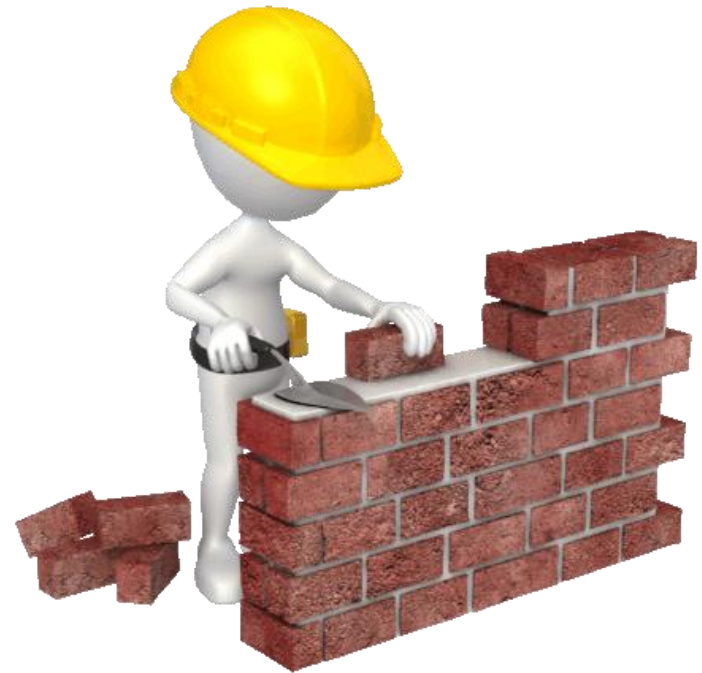
Impact of Parents' Disapproval on Youth 30-day Use



Parental disapproval reduces the likelihood that young people will use alcohol, marijuana, or other drugs.

Solution-oriented Thinking

- ◉ **40 Developmental Assets is about giving youth the building blocks to succeed**
- ◉ **Research shows a direct correlation...more assets equals less risky behaviors and better outcomes**



What are some of Dryden's strengths?

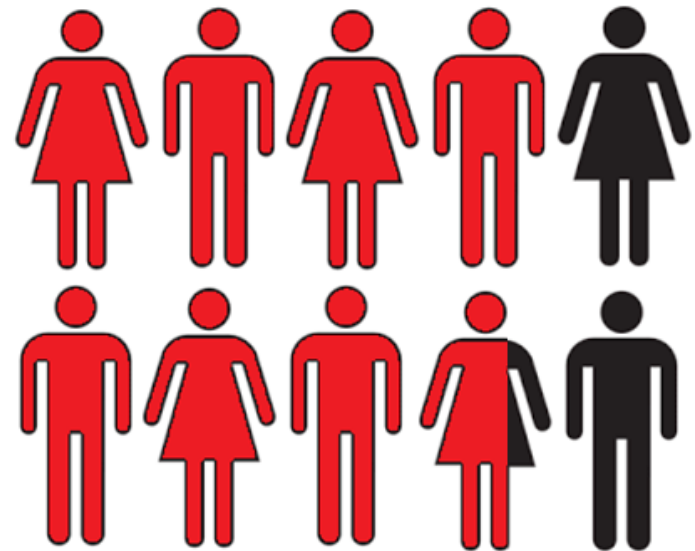


What are our strengths?

Asset:
**Family
Support**



77%

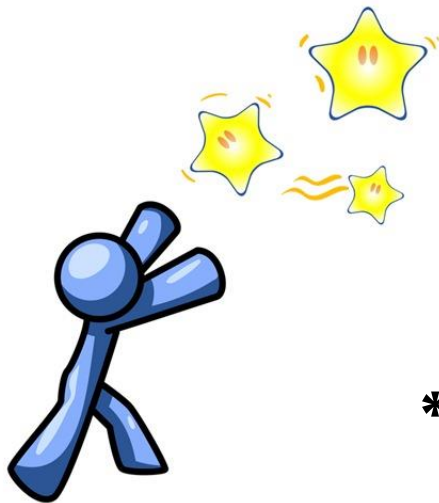
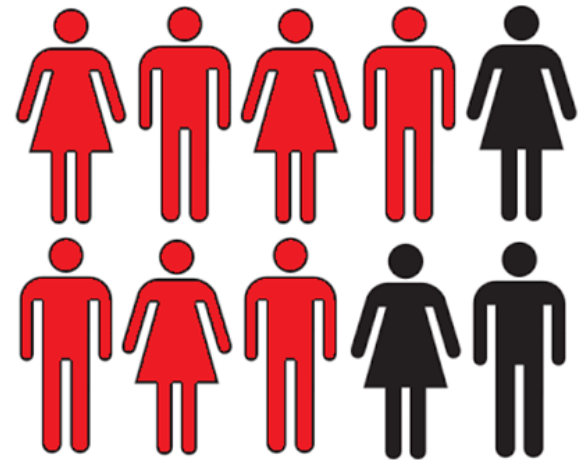


Ahead of national average

What are our strengths?

Asset:
**High
Expectations**

69%



Ahead of national average

What are our strengths?

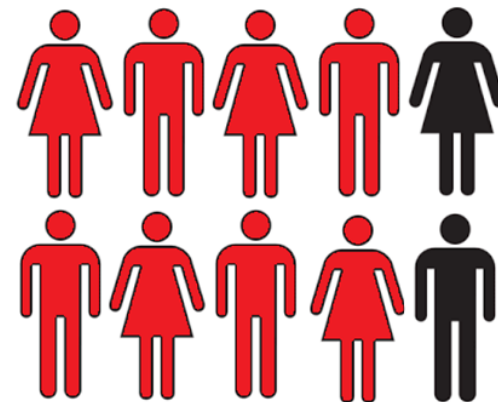
Positive Values Assets:

-Honesty
-Integrity
-Responsibility

82%

82%

76%

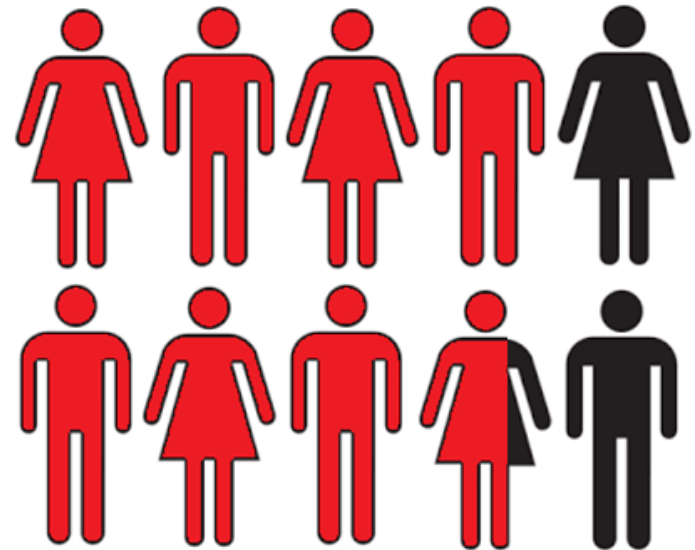


All ahead of national average

What are our strengths?

Asset:
**Positive Peer
Influence**

78%



Ahead of national average

What are our strengths?

Asset:
**Service to
Others**

57%



Ahead of national average

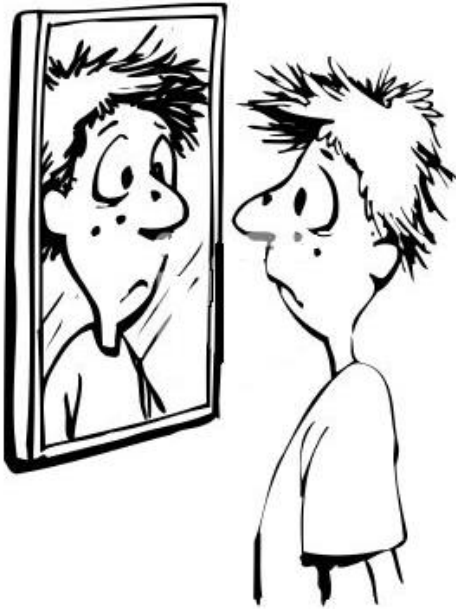
What are some of Dryden's weaknesses?



What are our weaknesses?

Asset:
Self Esteem

38%



Well below national average

What are our weaknesses?

Empowerment Assets:

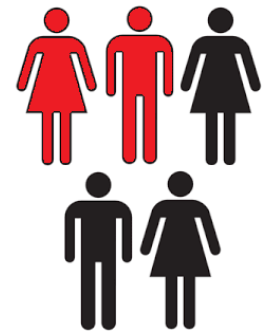
-Community Values
Youth

28%



-Youth as Resources

36%



Around national average

What are our weaknesses?

Asset:
Reading for
Pleasure

19%



Below national average

What are our weaknesses?

Asset:
**Religious
Community**



30%

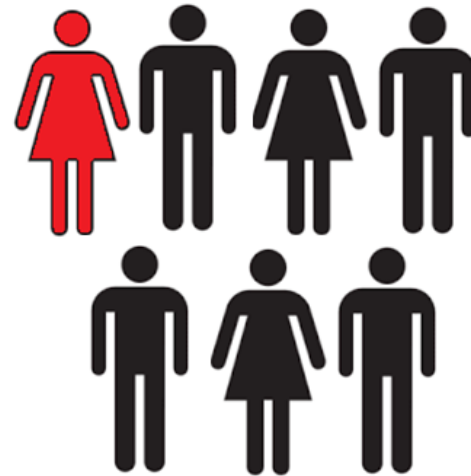


***Well below
national average***

What are our weaknesses?

Asset:
**Creative
Activities**

14%



Around national average

Do the boys and girls data differ?



Do our girls' and boys' data differ?

- Boys trail girls in the following:

- Reading for pleasure by 19%



- Homework by 19%



- Interpersonal competence by 18%



Do our girls' and boys' data differ?

- Girls trail boys in the following:
 - Positive view of their future by 22%
 - Safety by 25%
 - Sense of purpose by 21%
 - Self-esteem by 30%

CRISIS



Do our students in poverty differ?

- ◉ *Note: About 50% of Dryden students are coming from poverty backgrounds*
- ◉ Five fewer assets on average
- ◉ Biggest gap assets:
 - ◉ Achievement motivation
 - ◉ Self-esteem
 - ◉ Adult role models
 - ◉ Community values youth



Other interesting/standout data

- **Home alone** 20% more than national avg.
- **Juniors having sex** 41% had...10pts more than national avg.
- **Riding with impaired driver** 18% did in the last year
- **Juniors on marijuana** 53% find it a risky behavior
- **Physical abuse at home** Just over 20%

Other interesting/standout data

- Trauma:
 - 32.9% report family member having severe alcohol/drug problem
- Transiency:
 - 16.9% changed homes in the last year
 - 20.2% have moved 5+ times
- Family Discipline:
 - 12pts below avg. on 100pt scale
- Family:
 - 54% live with both biological parents (62% is national average)



Mental Health

	Dryden	County
Life is not worth it	27.4%	24.7%
I think I'm no good at all	36.0%	34.5%
I'm a failure	23.9%	21.6%
I'm sad or depressed most days	33.8%	30.7%

Connection to Neighbors

	Dryden	County
Neighbors notice me doing a good job	24.3%	25.5%
Has a neighbor they could talk with about something important	39.3%	43.3%
Neighbors are proud of me when I do well	40.4%	43.2%
Neighbors encourage me to do my best	45.5%	52.0%
I don't feel safe in my neighborhood	22.1%	14.4%

Connection to Mom and Dad

	Dad		Mom	
	Dryden	County	Dryden	County
I'm not close with my...	26.7%	27.2%	21.2%	15.4%
I don't share my thoughts and feelings with my...	44.6%	41.7%	36.6%	29.4%

Areas of School District improvement:

	2012	2014	2016*
Feels welcomed and appreciated by school adults	31.4%	33.3%	39.7%
Has a trusted adult in school who can help with problems	44.1%	45.0%	51.7%
Feel school rules are fairly enforced	25.9%	26.5%	32.3%

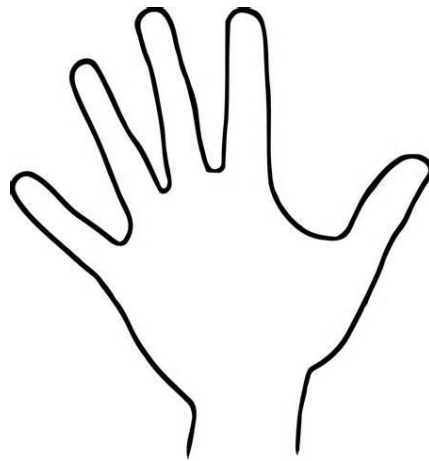
***While these numbers are low, we are not far off the County average and are showing real growth with our Youth Development work**

Note: We also are above the national average for the “Caring School Climate” asset

Today's challenge

What “arrested” you today?

Give the youth of Dryden a “high five”



...and don't leave them hanging !